

flyWithCE Navigator

Memory card installation

Version: 3.02

Last revision: 23.6.2007

1. Memory card types	3
2. Transfer Navigator program to the memory card.....	3
2.1. Copy Navigator program to the memory card.....	4
2.2. Update Navigator program to the memory card.....	4
3. Quick (automatic) install	5
4. Run Navigator program.....	5
5. Manual install (if automatic install does not work)	5
6. Check where program is running from.....	6
7. Add new databases	6
7.1. Where can I find database?	6
7.2. Copy databases using Microsoft ActiveSync.....	7
7.3. Copy databases using File Explorer on your notebook PC.....	7
7.4. Select new databases in Navigator	7
8. Where will Navigator save my IGC flight logs?	8

1. Memory card types

Most Pocket PC devices will support one of the following memory cards:



Compact Flash memory card
or CF card



Secure Digital memory card
or SD card

Important: Secure Digital card has also a lock switch. This should NOT be in the locked position for normal operation of flyWithCE Navigator.

2. Transfer Navigator program to the memory card

If you have ordered the program on the memory card, then you should continue reading the **Quick install** section. This section explains how to:

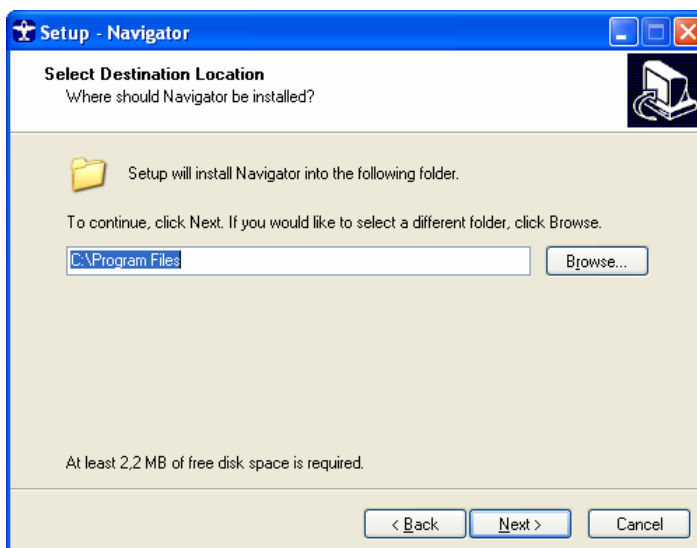
- install Navigator from PC to empty memory card – **Install from PC** section
- install Navigator to the empty memory card – **Copy installation to memory card** option
- update program when new Navigator version is released – **Update software on memory card** option

Last two options enable you to transfer already installed Navigator to the memory card (or you can first install program to Pocket PC and then move program to memory card). With version 3.02 first option was introduced. By using memory card reader connected to the PC (or built inside PC) you can install or update program directly on the memory card.

2.1. Install from PC

For this install you need different installation program. Go to the flyWithCE download page and download program **Navigator - Memory card install**. Downloaded program name should look like naSetupMC3???.exe (where ??? represent version of the program). Then you should insert memory card that you will use to memory card reader and run the installation program.

This is standard program and there is only one important step:



Here you have exchange the letter C with letter of the memory card drive in which is memory card to which you would like to install the program. After the Navigator installation is completed you should transfer databases (waypoint files, airspace files, maps) to the **Databases** folder on the memory card. You can remove the memory card from memory card reader and insert it to the Pocket PC.

To complete the installation run the Navigator and add new databases in the **Settings** dialog on the **Files** tab.

The same procedure can be used to update the version of the Navigator on the memory card.

2.2. Copy Navigator program to the memory card

To install the program on the memory card you should follow this procedure:

1. Download and install Navigator program on to the Pocket PC device.
2. Run program from main memory by selecting Start – Programs – open flyWithCE folder and run Navigator.
3. Register Navigator. If possible use registration code which is displayed beside the memory card folder name.
4. Go to the **Installation** dialog and select **Installation tab** and use **Copy installation to memory card** option. Select the memory card to which you would like to copy Navigator and than press **Copy** button.
5. After successful installation you can uninstall the Navigator from the main memory by using Start – Settings – System tab – Remove Programs option. Select Navigator and press remove button.

Program is now transferred to the memory card.

Here is the picture of the Installation tab in the Installation dialog:



2.3. Update Navigator program to the memory card

To update the program on the memory card you should:

1. Download and install Navigator program on the Pocket PC device.
2. Run program from main memory by selecting Start – Programs – open flyWithCE folder and run Navigator.
3. Go to the **Installation** dialog and select **Installation tab** and use **Update software on memory card** option. In the drop down control select the memory card, where Navigator is already installed and than press **Update** button.
4. After successful installation you can uninstall the Navigator from main memory by using Start – Settings – System tab – Remove Programs option. Select Navigator and press remove button.

Program has been updated.

3. Quick (automatic) install

Turn on the Pocket PC and then insert memory card into the appropriate slot and the following message box will confirm correct installation. If message box is not displayed then follow instructions displayed in Manual install section.



Information displayed in message box will inform you about the shortcut name that you will have to run and about the shortcut position.

4. Run Navigator program

To run the program select **Start – Program** and then open **flyWithCE** folder. Then run appropriate shortcut (name was displayed in message box):

Memory card	Navigator shortcut name
Run navigator from main memory	Navigator
Pocket PC 2002 or older	
Device dependant	Navigator Storage
Pocket PC 2003 or newer	
Secure Digital memory card	Navigator SD
CompactFlash memory card	Navigator CF

5. Manual install (if automatic install does not work)

With card inserted in your Pocket PC run File Explorer. Memory cards are located on the root directory and are marked with a different icon. Naming of the memory cards is not the same for all Pocket PC devices and also depends on the manufacturer.

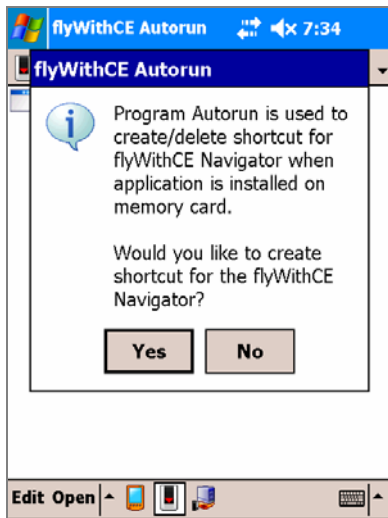
Folder name	Memory card type
Pocket PC 2002 or older	
Storage Card	device dependant (usually SD card)
Pocket PC 2003 or newer	
SD Card	Secure Digital memory card
CF Card	CompactFlash memory card

iPAQ users will also notice another folder **iPAQ File Store** which is also marked as memory card. This is internal Flash memory which is formatted as a memory card.

On memory card open folder:

- 2577 for ARM devices (all devices except Compaq Aero 15XX)
- 4000 for MIPS devices (Compaq Aero 15XX).

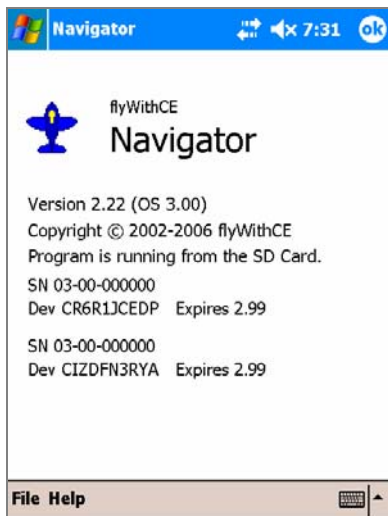
Then run application Autorun.exe and following message box will be displayed.



Select Yes and program will be installed. Then run the program as described in one of the previous sections.

6. Check where program is running from

If Navigator is already running then open Help – About window to check where it is running from. Information is displayed in the middle of the About window.



7. Add new databases

7.1. Where can I find database?

You can get waypoint, airspace and elevation map databases from following web sites:

- waypoint <http://soaring.aerobatics.ws/TP/>
- airspace <http://soaring.aerobatics.ws/SUA/>
- elevation map <http://www.flywithce.com/data.html>

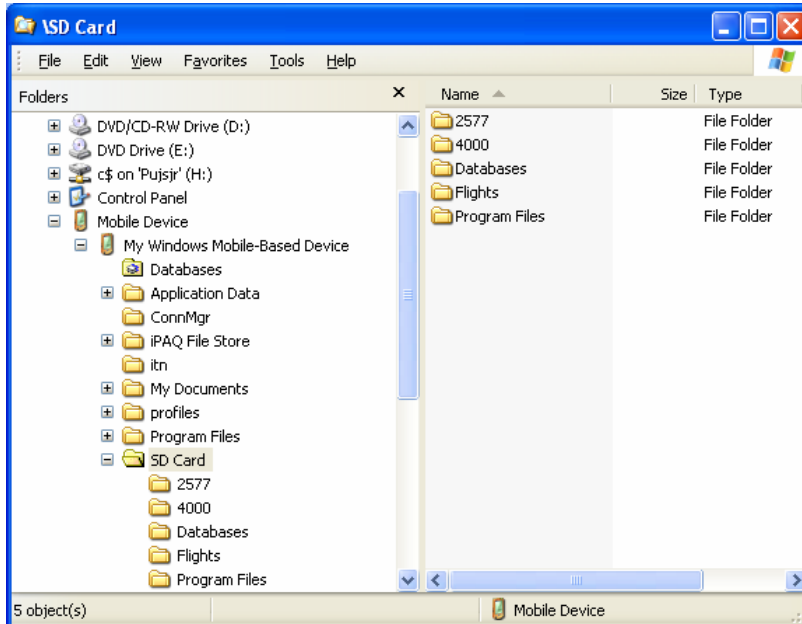
Select appropriate database and transfer the file to local hard drive.

7.2. Copy databases using Microsoft ActiveSync

To be able to transfer files from your desktop PC to Pocket PC you have to install Microsoft ActiveSync application. You can download this program from:

<http://www.microsoft.com/windowsmobile/activesync/default.msp>

Install the program on your desktop PC and then connect both computers (usually with a USB cable). After you establish a connection between the PC and Pocket PC, you can open Windows File Explorer and transfer files to the Pocket PC, which is located in the **My Computer** folder as **Mobile Device** folder.



Open **My Windows Mobile-Based Device** and then the memory card subfolder (name as described in the Manual install section). You should Copy – Paste database files to the **Databases** folder on your memory card.

7.3. Copy databases using File Explorer on your notebook PC

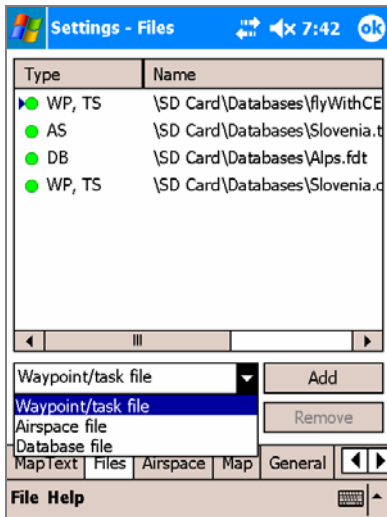
Some notebooks have an SD or CF card slot or you can use memory card readers connected to a USB port. You can insert the memory card directly into this slot and the memory card will be presented as a removable hard disk in Windows File Explorer. You should Copy – Paste database files to the **Databases** folder on your memory card.

7.4. Select new databases in Navigator

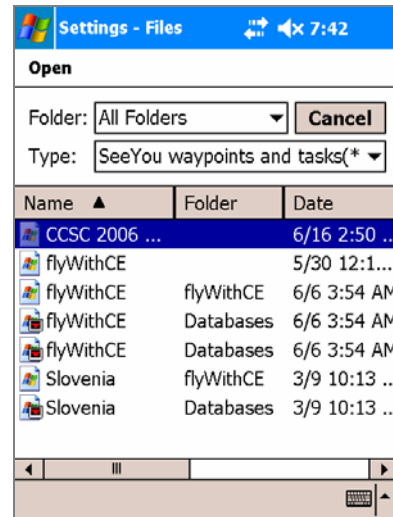
Run the Navigator program and open the Settings dialog. Open the Files tab and add new databases:

1. Select database type in the drop-down control.
2. Press the Add button.
3. Select file.

Note that all files located on the memory card have a different icon before the file name.



Select file type and press Add



Select database file (from memory card)

Important: Make sure that you only select files from memory card. If they are not stored on memory card you will not be able to switch memory card from one Pocket PC to another.

8. Where will Navigator save my IGC flight logs?

All IGC flight logs will be saved to the **Flights** folder on your memory card. To enable logging option **Enable IGC file logging** must be checked and your pilot and glider information should be entered.

